



**CALIFORNIA
WATERFIX**
RELIABLE. CLEAN. WATER.

A MODERN INFRASTRUCTURE UPGRADE

WaterFix is part of the state's overall water management portfolio, which includes conservation, water management, recycling, ecosystem protection and more.

KEY PROGRAM GOALS



Secure clean water supplies for 25 million Californians and 3 million acres of farmland.

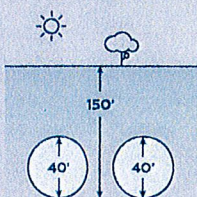


Improve the Sacramento-San Joaquin Delta's ecosystem.

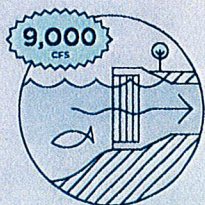


Update California's aging water delivery system.

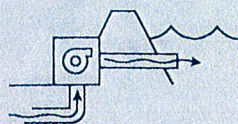
WATER DELIVERY UPGRADE



Tunnels up to 150' below ground designed to protect California's water supplies from sea level rise, earthquakes, floods and levee failure.



New intakes located on the Sacramento River, closer to high quality water and away from critical habitats.



A pumping plant to lift water into Clifton Court Forebay.

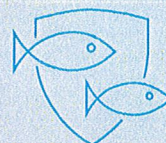
IMPROVED RIVER FLOWS & ECOSYSTEM HEALTH



A return to more natural river flows in the south Delta, minimizing harmful reverse flows caused by powerful pumps.



Continued compliance to meet San Francisco Bay outflow requirements to protect against salt water intrusion and improve the overall health of the Delta ecosystem.



New intake location away from endangered species, with advanced fish screens that protect even the smallest species.

Improving the reliability and sustainability of California's aging water system.

PRIMARY PROJECT FEATURES

NORTH DELTA

- ▶ Three north Delta intakes closer to the original Sierra Nevada mountain source where water quality is higher and impacts to fish are lower. The addition of the new intakes offers increased flexibility to operate in conjunction with the existing system to optimize exports while meeting environmental and water quality standards.
- ▶ New forebay and forebay overflow facility
- ▶ Reusable tunnel material areas
- ▶ Tunnel shafts

CENTRAL DELTA

- ▶ Gravity-fed underground tunnels improve operation and maintenance; protect clean water supplies from salt water intrusion due to sea level rise, earthquakes, floods and levee failure; and improve long-term reliability by reducing internal tunnel pressure.
- ▶ Reusable tunnel material area
- ▶ Tunnel shafts

SOUTH DELTA

- ▶ Tunnel terminous
- ▶ New forebay adjacent to existing Clifton Court Forebay
- ▶ Combined pumping facility at Clifton Court Forebay
- ▶ Reusable tunnel material areas
- ▶ Tunnel shafts

DELTA ECOSYSTEM BENEFITS

WaterFix will contribute to the **restoration and protection of approximately 15,600 acres** of critical Delta habitat as mitigation for ongoing construction and operational impacts.

COST AND FUNDING

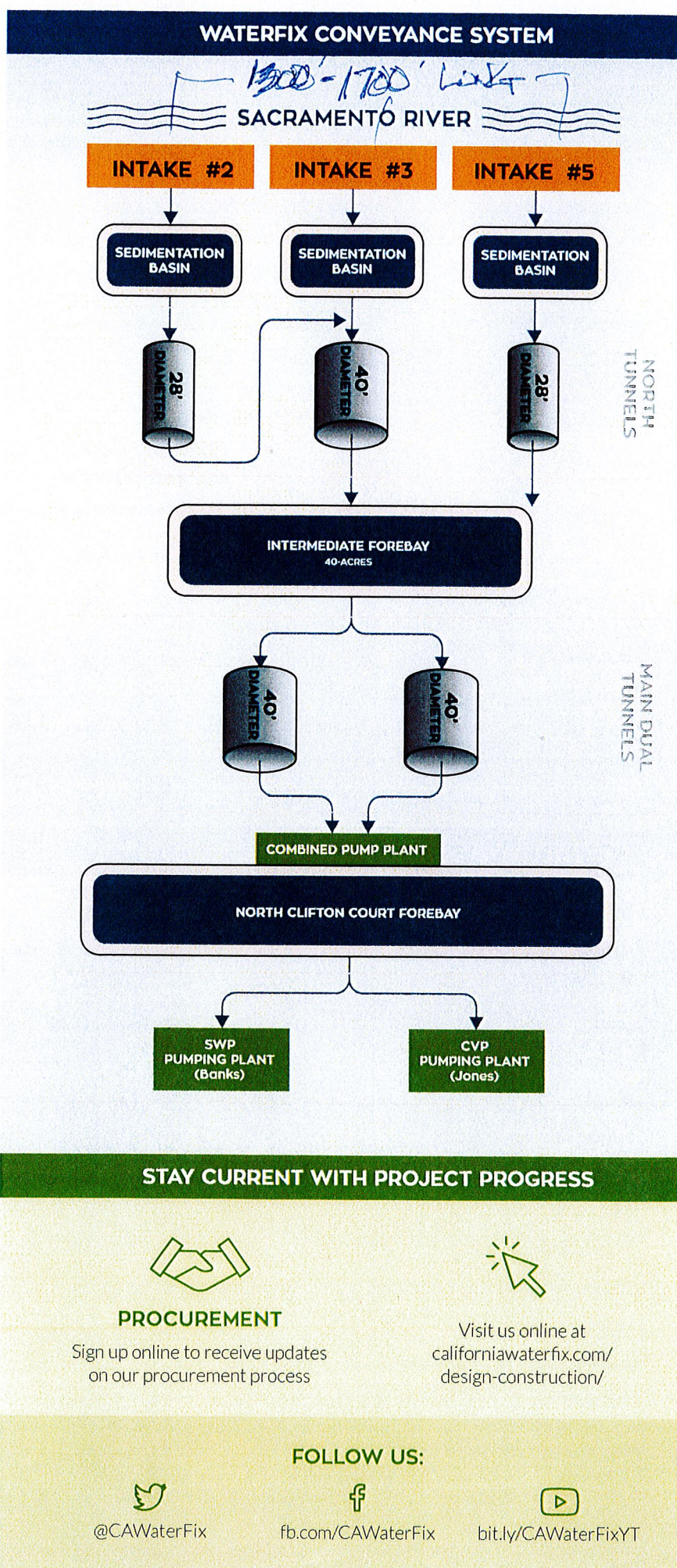
\$796 MILLION
MITIGATION & ASSOCIATED ACTIONS
paid for by
Public Water Agencies

\$14.94 BILLION
TUNNEL DESIGN & CONSTRUCTION
paid for by
Public Water Agencies

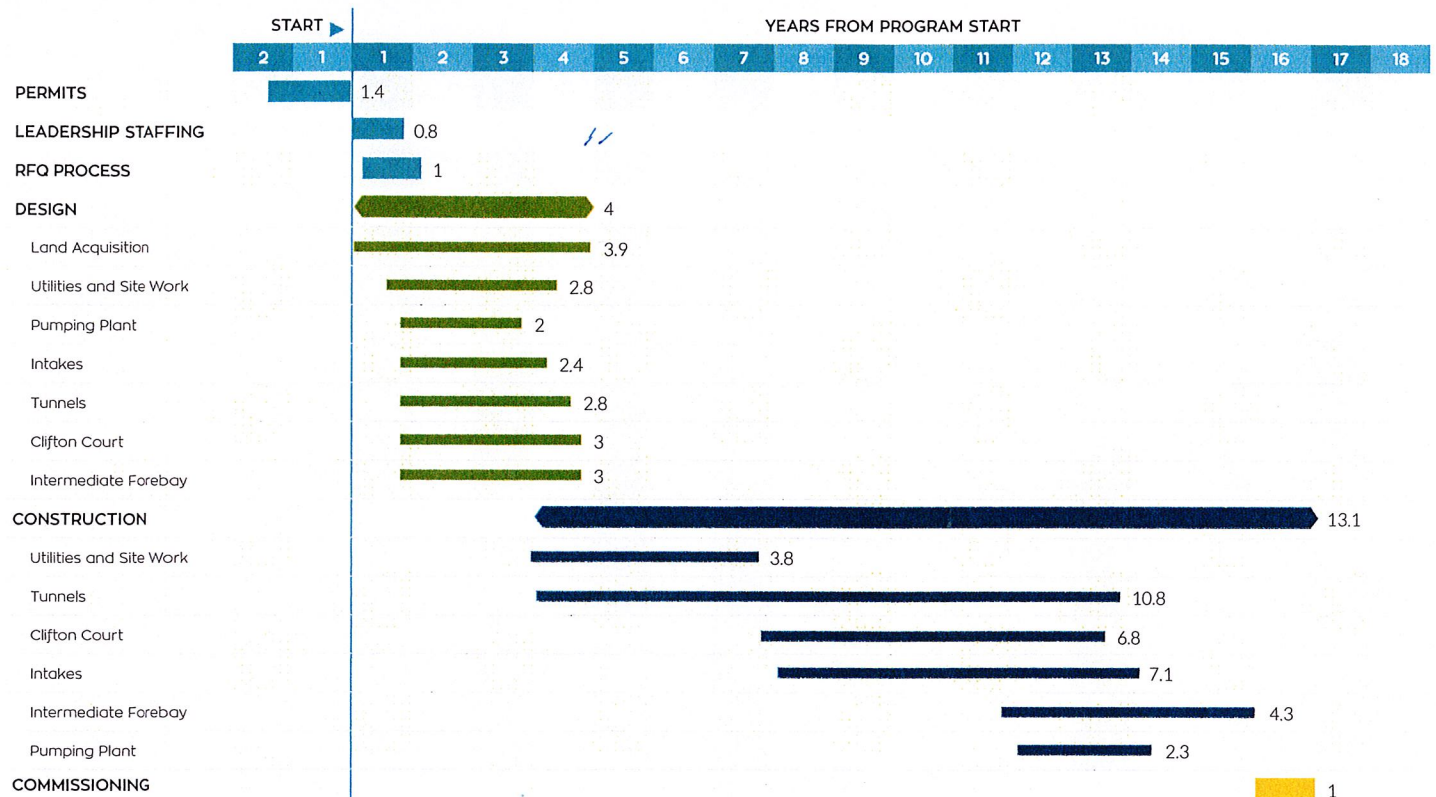


2014 dollars

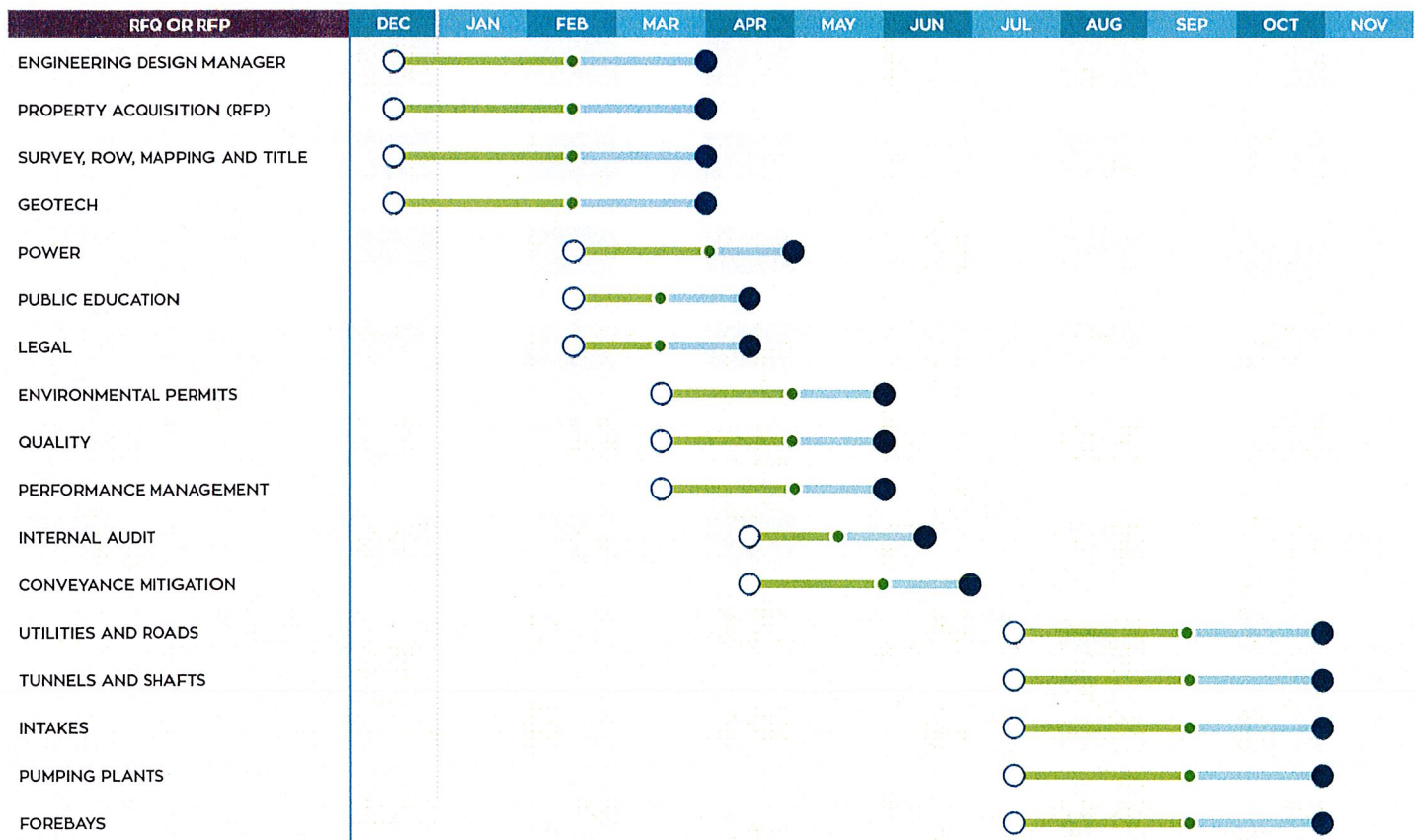




PROGRAM SUMMARY SCHEDULE



2018 REQUEST FOR QUALIFICATIONS (RFQ) / REQUEST FOR PROPOSALS (RFP) SCHEDULE



*Not a complete list; issuance dates are subject to change.

○ Advertise ■ Consultant Response Period ● Consultant Response Due ■ Agency Selection Period ● Award